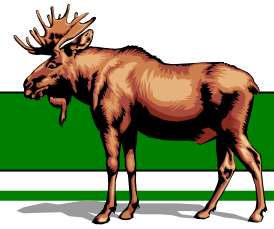




Ontario

Ministry of
Natural
Resources

Ministère des
Richesses
naturelles



April 2008

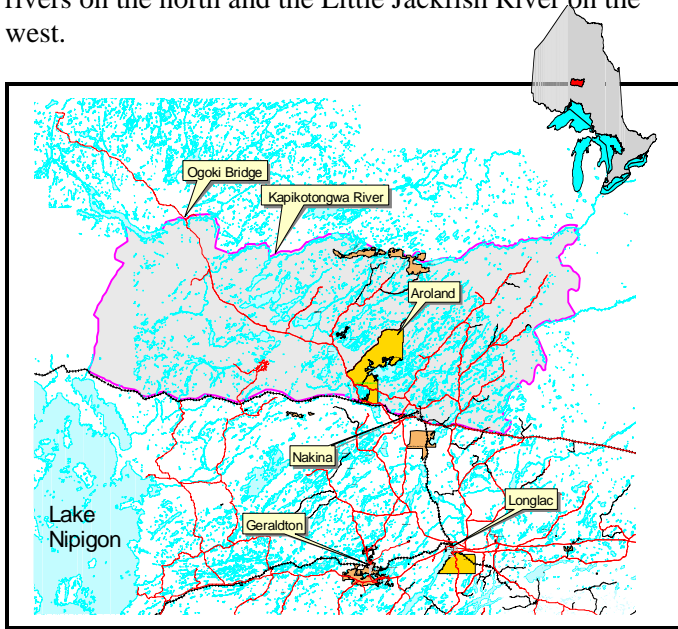
Resources Report – Status of Moose in WMU 18A

Introduction

Resources Reports have been prepared to provide information to hunters and other members of the public on the status of moose populations in individual Wildlife Management Units (WMUs) across Ontario. These reports will be updated periodically every one to three years, as new information becomes available.

Description of WMU 18A

Wildlife Management Unit 18A is 8,500 km² in size, located north of Nakina. The abandoned Pagawa Rail line and the Nakina-Armstrong CNR line bound it on the south, the Drowning River, Jemar and Prairie Lakes on the east, the Ogoki, Kapikotongwa and Little Current rivers on the north and the Little Jackfish River on the west.



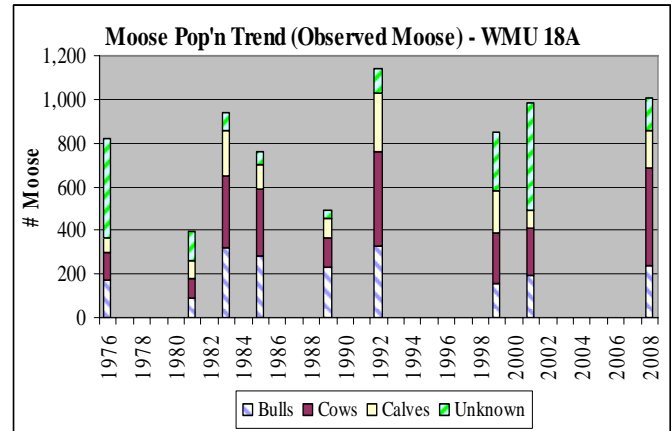
Habitat

WMU 18A lies within the Boreal Forest Region of Northwestern Ontario, and is typical of a natural wildfire driven ecosystem. It contains both coniferous and hardwood tree species in pure and mixedwood stands. The predominant species are: 65% black spruce; 8% jack pine; 13% trembling aspen; 5% white birch and 5% balsam fir.

The unit is almost entirely Crown land (>90%) and has an extensive network of logging roads. (*Information on hunting closures is available at local Ministry of Natural Resources offices.*)

Survey History and Moose Population

The 2008 survey estimated the population to be 1009 animals. This is statistically the same as the 2001 survey. This unit has a relatively low density of 0.12 moose/km².



The Moose Hunt

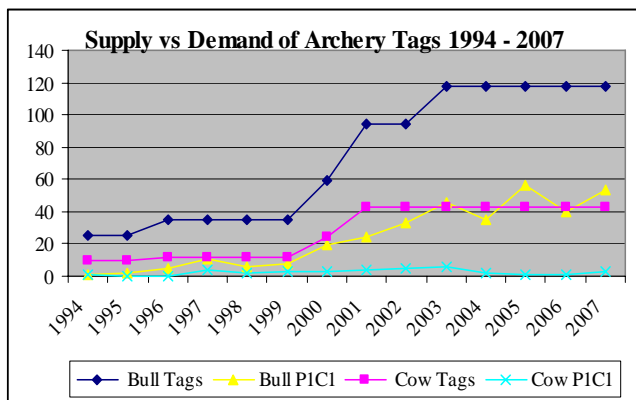
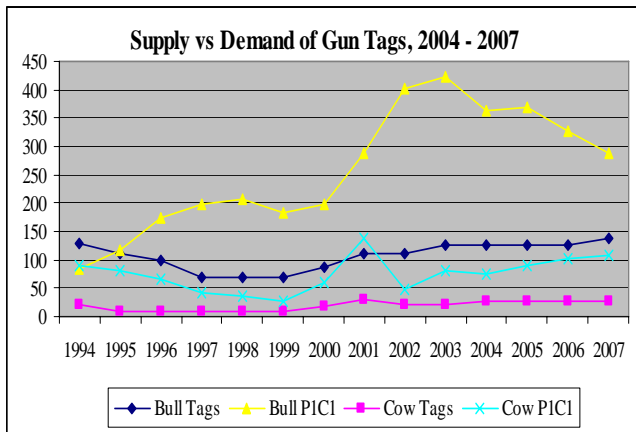
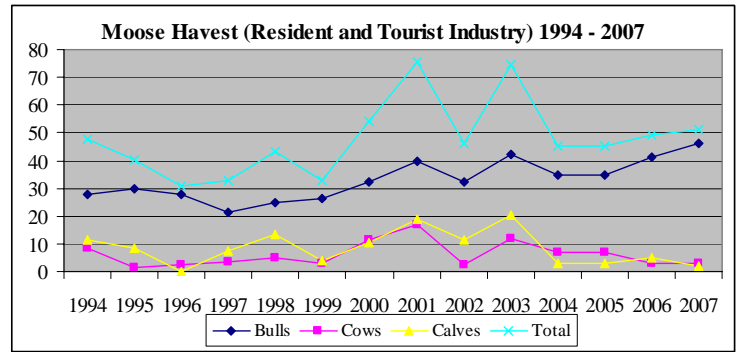
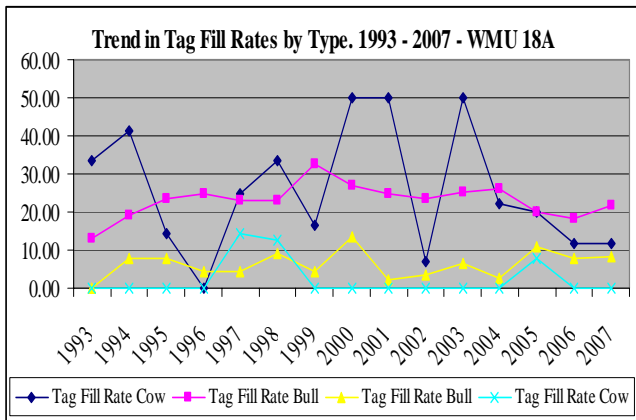
The resident gun season starts in early October and runs until December 15th. There is also a three week archery season prior to the gun season. (*Check the hunting summary for exact dates*). The moose harvest by aboriginals is high in this unit.

The tourist industry (TI) harvest allocation in WMU 18A is 12.7% of the total adult allocation. All hunters who receive a TI tag must be accommodated at the tourist establishment.

Tag Quotas

Tag quotas are adjusted on a yearly basis to account for changes in the moose population as well as changes in the harvest. Over the years voluntary annual postcard surveys and mandatory reports of tourist clientele have identified an increase in tag fill rates. Changes occurring in tag numbers in years between aerial inventories are usually due to this increase.

The guaranteed group size for gun bull will be 4 and cow will be 5 in 2008. The guaranteed archery tags have remained constant at 2.



Other Wildlife

Forest-dwelling Woodland Caribou are present in this unit and are classified as a threatened species both provincially and nationally and afforded protection under the provincial Endangered Species Act, 2007, as well as the federal Species at Risk Act.

White-tailed Deer are present in this unit but there is no hunting season.

Strategy

The population target for this unit is 1,324 moose. The management strategy is to increase the moose population. Calf harvests will be monitored carefully to ensure that they remain within a sustainable range. The moose population will continue to be monitored through aerial inventories and harvest levels will be adjusted accordingly. Forest management activities will incorporate strategies to protect and promote specific moose habitat components.

Prepared by:
 Evan Armstrong
 Area Biologist
 Geraldton Area Office
 Nipigon District
 807-854-1808
evan.armstrong@ontario.ca

Harvest

The planned harvest is 51 bulls, 15 cows and 16 calves. In 2007, the overall harvest was estimated at 38 to 55 bulls, 2 to 5 cows and 1 to 3 calves. Hunter postcard survey returns are in the 48% to 70% range, which is very poor. The tourist industry accounted for 8.7% of the total harvest in 2007 while the resident gun hunter accounted for 73.9% and the archer for 17.4%.

