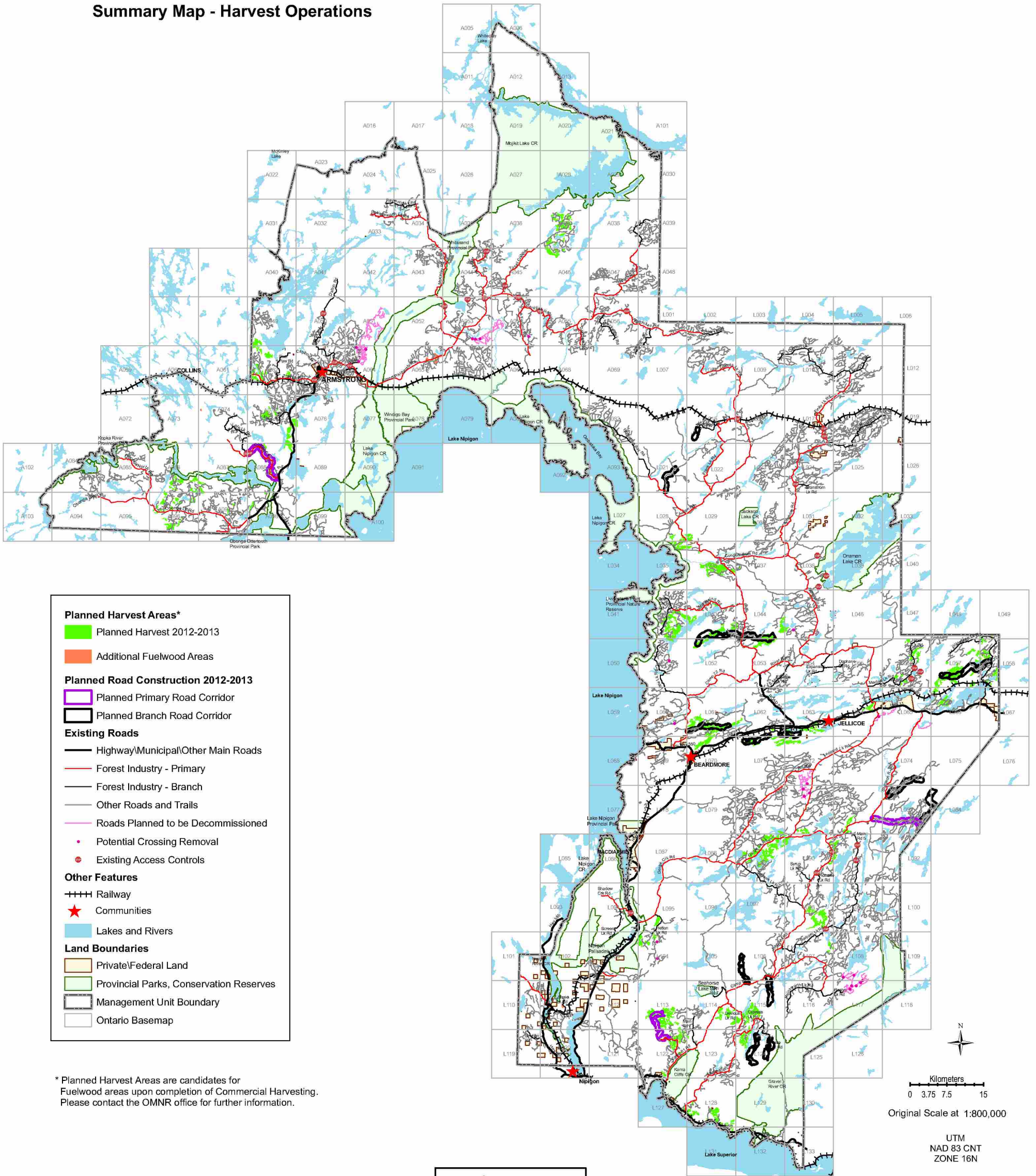


# LAKE NIPIGON FOREST 2012-2013 Annual Work Schedule Summary Map - Harvest Operations



**Planned Harvest Areas\***

- Planned Harvest 2012-2013
- Additional Fuelwood Areas

**Planned Road Construction 2012-2013**

- Planned Primary Road Corridor
- Planned Branch Road Corridor

**Existing Roads**

- Highway/Municipal/Other Main Roads
- Forest Industry - Primary
- Forest Industry - Branch
- Other Roads and Trails
- Roads Planned to be Decommissioned
- Potential Crossing Removal
- Existing Access Controls

**Other Features**

- Railway
- ★ Communities
- Lakes and Rivers

**Land Boundaries**

- Private/Federal Land
- Provincial Parks, Conservation Reserves
- Management Unit Boundary
- Ontario Basemap

\* Planned Harvest Areas are candidates for Fuelwood areas upon completion of Commercial Harvesting. Please contact the OMNR office for further information.



© Queen's Printer for Ontario, 2012  
February 27, 2012.

Produced by **GFMI** GreenForest Management Inc.  
FOR  
**LAKE NIPIGON FOREST MANAGEMENT INC.**